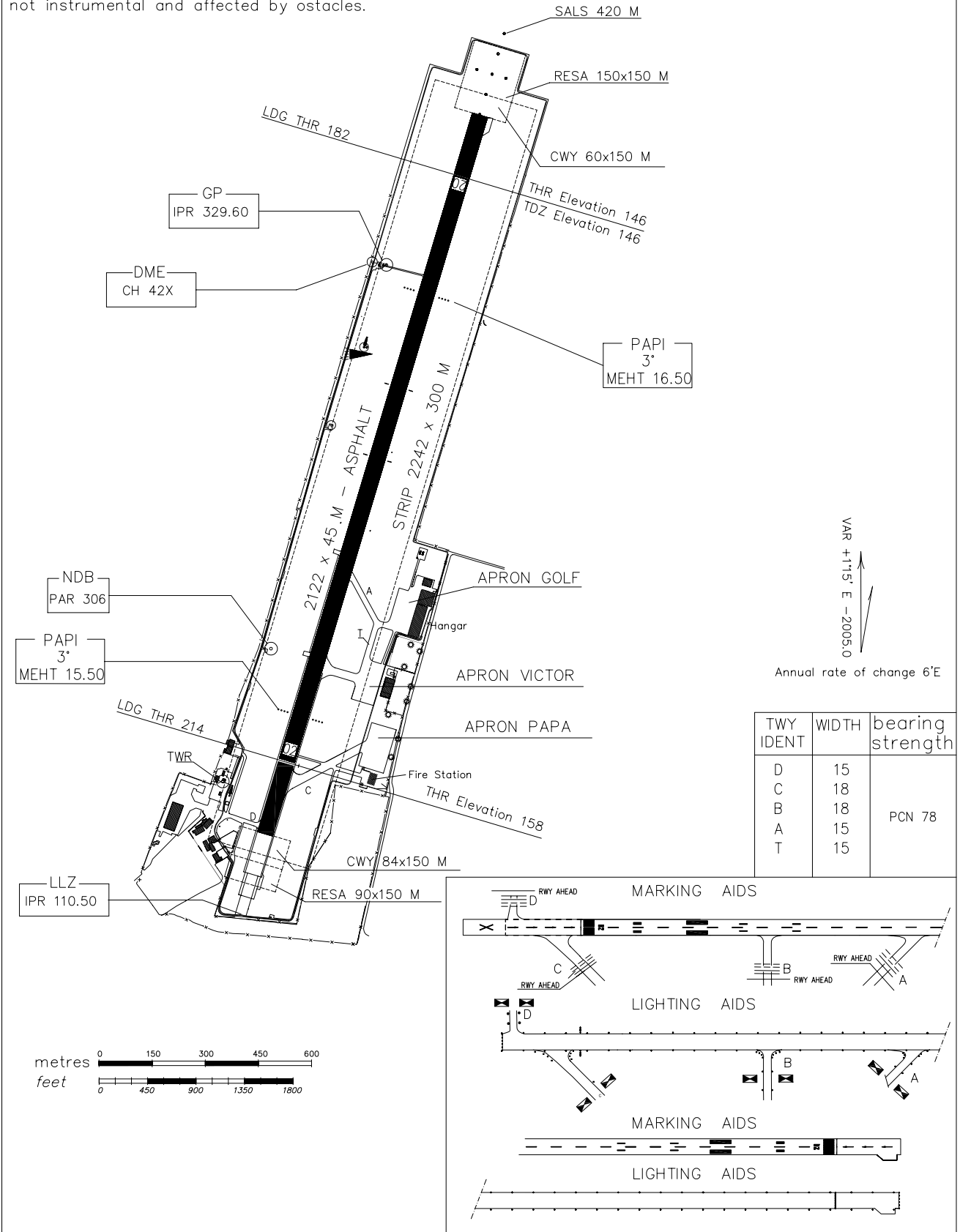


Bearings are magnetic Distances in metres Elevation in FT AMSL Coordinates WGS84		AFIS 118.450	AD ELEV 161	PARMA	
			APRON ELEV 155		
RWY	QFU	THR	bearing strength		
02	016°	N 44°49'10.18" E 010°17'38.16"	PCN 78		
20	196°	N 44°50'03.54" E 010°18'01.63"			

WARNING

OBSTACLE PROTECTION SURFACE for PAPI 02 not instrumental and affected by obstacles.

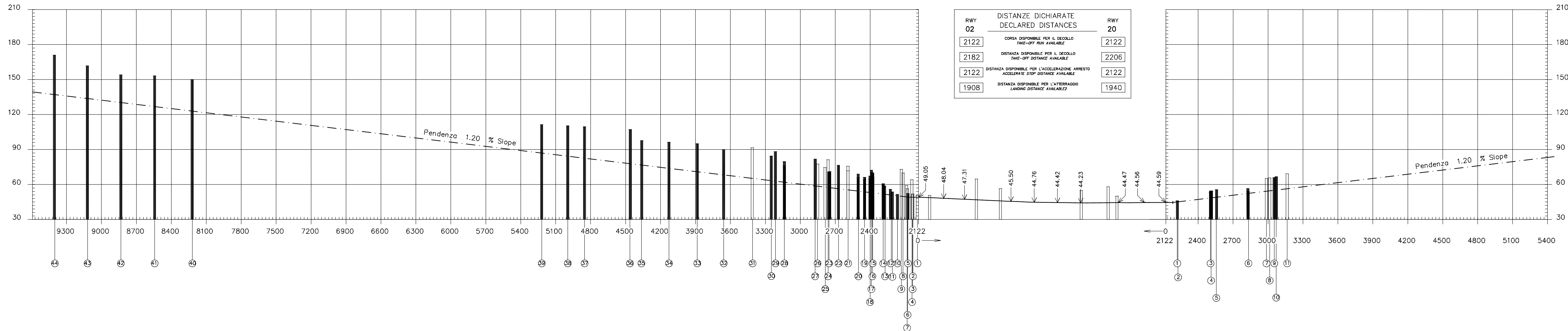
CHANGE: New Declared Distances and PAPI 02



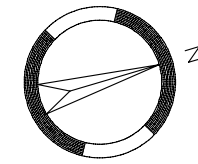
Dimensioni ed altitudine in metri
Dimensions and elevations in metres

CARTA DEGLI OSTACOLI DI AERODROMO - TIPO A OACI Limitazioni operative
AERODROME OBSTACLE CHART - ICAO TYPE A Operating limitations

ITALY PARMA / RWY 02-20

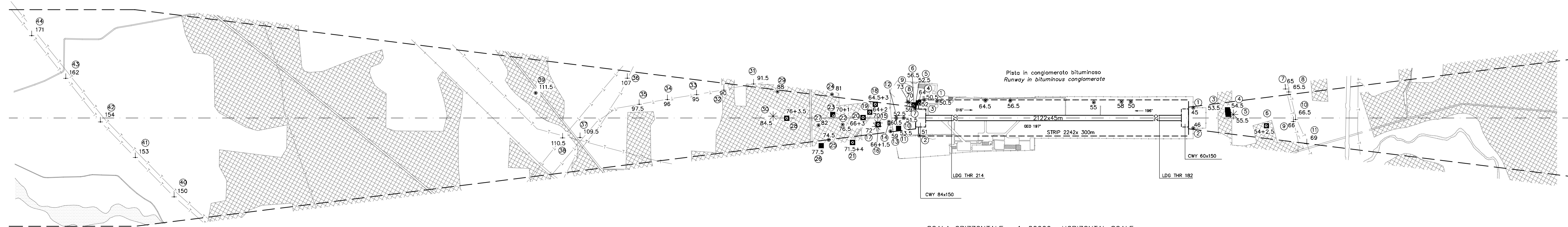


Declinazione magnetica
Magnetic variation 1° 15' E 2005.0

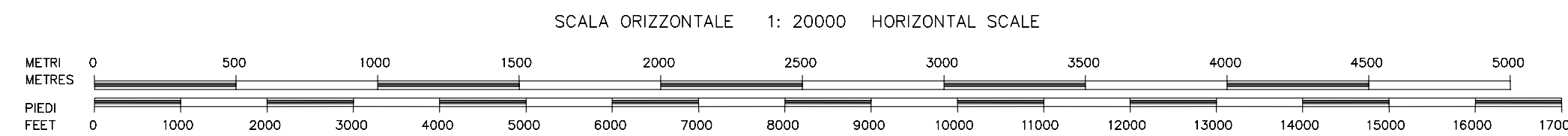


CONSULTARE I NOTAM PER LE ULTIME INFORMAZIONI
CONSULT NOTAM FOR LATEST INFORMATION

LEGENDA	LEGEND	PIANTA PLAN	PROFILO PROFILE
Numero di identificazione Identification number	①	①	①
Profilo ostacoli situati nell'area di decollo Obstructions with in the take-off flight path area	█	█	█
Profilo ostacoli situati fuori dell'area di decollo Obstructions beyond the take-off flight path area	▬	▬	▬
Altitudine dell'ostacolo ed altezza dell'antenna se esistente Obstacle altitude and antenna height if available	56+1.5		
Edificio o costruzione importante Building or large structure	■		
Pala, torre, campanile, traliccio, antenna, ciminiera Pole, tower, spire, lattice, antenna, chimney	○		
Albero o arbusto - Gruppo di alberi Tree or shrub - Wooded areas	* - *		
Centro abitato Built-up area	▨		
Ferrovia (uno o due binari) Railroad (one or more tracks)	+++		
Linea trasporto energia elettrica - cavo sospeso Transmission line - Overhead cable	—T—T—		
Recinzione Fence	—o—o—		
Terrano sporgente dal piano ostacoli Terrain penetrating obstruction plane	▬		



Le precisioni della carta sono quelle descritte nell'annesso 4° capitolo 3.9
The accuracy on the chart are those included in annex 4° chapter 3.9



VARIANTI		AMENDMENT RECORD	
N.	DATA DATE	REGISTRATO DA ENTERED BY	